

# LADBROKE HALL

PRIVATE HIRE | *Children's Celebrations*

[events@ladbrokehall.com](mailto:events@ladbrokehall.com)





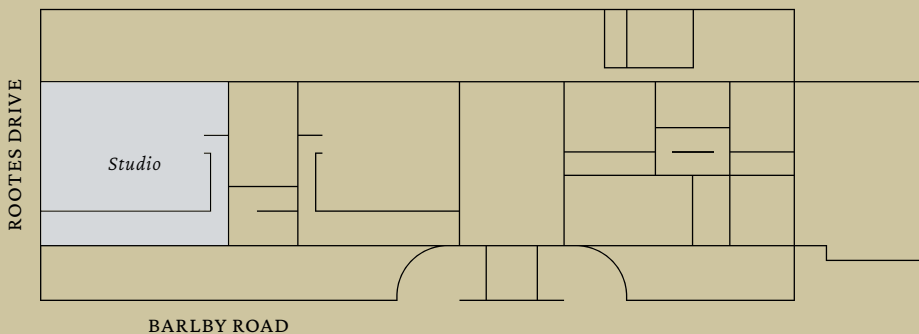
## MAGICAL MOMENTS AT LADBROKE HALL

*Where every child's dream comes to life*

Welcome to Ladbroke Hall, a place where imagination knows no bounds.

Whether it's a sensory birthday bash, a football tournament, or an enchanting tea party, Ladbroke Hall is the ultimate playground for your child's special day.

Let our expert team help you create unforgettable memories in a unique location.







## STUDIO

The Studio is an impressive and versatile space, perfect for creating the ultimate kids' party.

With its spacious layout and advanced lighting and sound systems, it easily transforms into a playground, wonderland, or adventure zone.

---

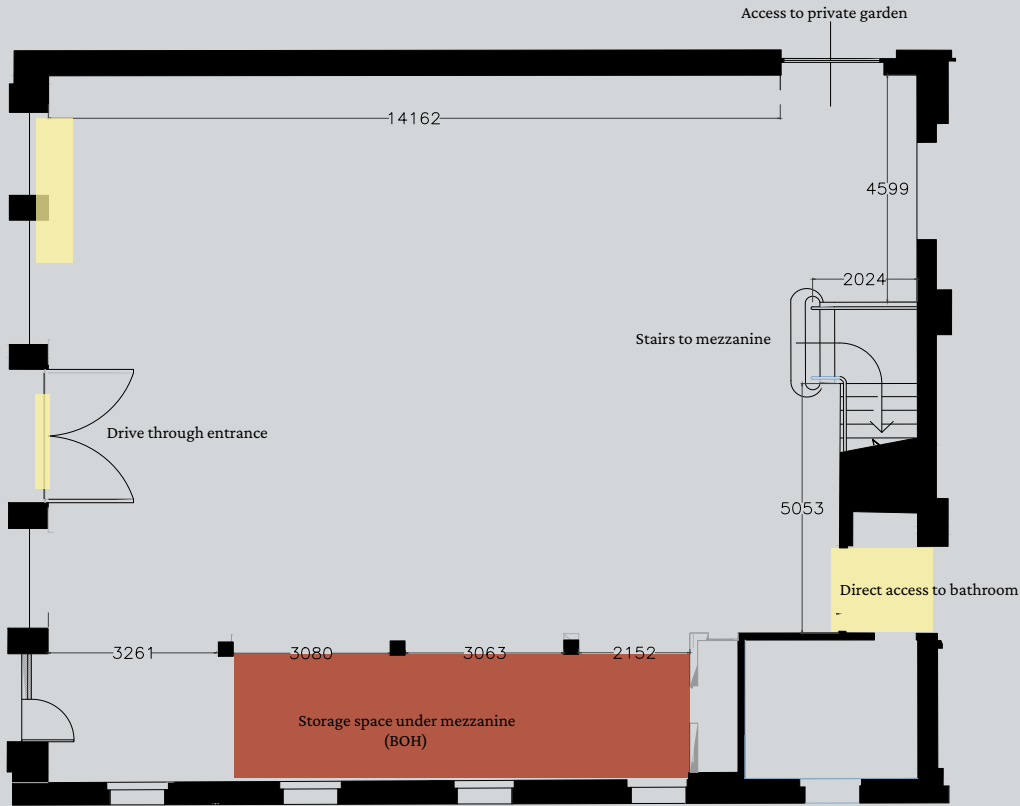
### KEY FEATURES

---

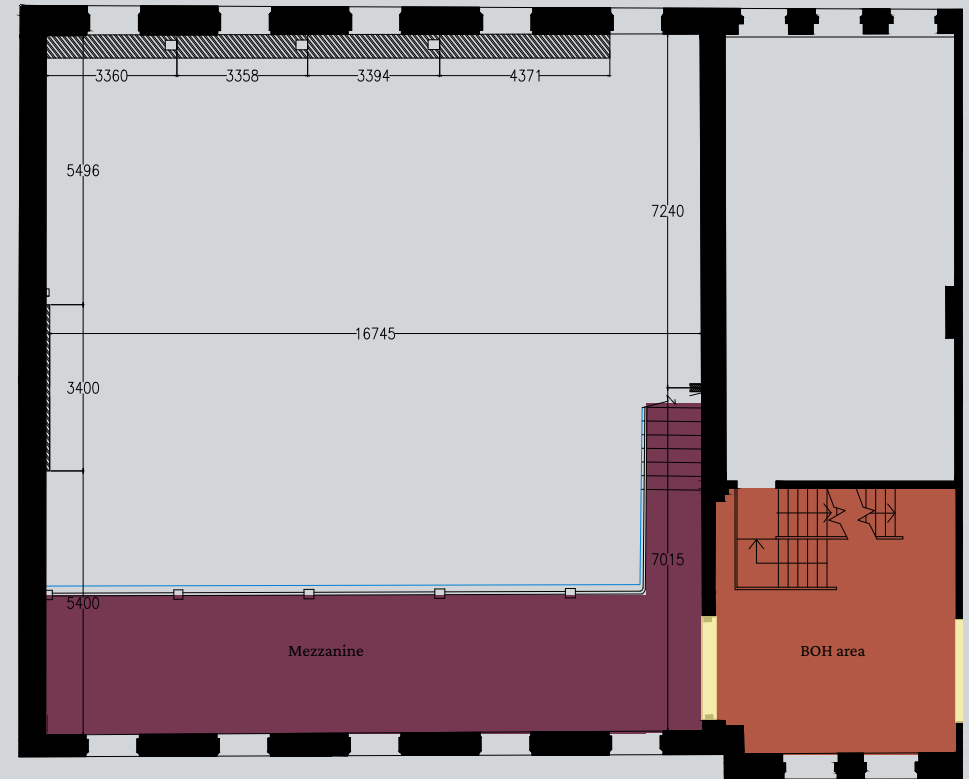
- Overall size: 297 m<sup>2</sup> / 3,200 sqft
- Ground floor: 227 m<sup>2</sup> / 2,443 sqft
- Mezzanine floor: 55 m<sup>2</sup> / 592 sqft
- Height: 9.95 m
- Soundproofed ceiling
- Full black-out capabilities
- Seated capacity: 220
- Standing capacity: 300
- Full AV and production capabilities
- State-of-the-art acoustics
- Full in-house catering on request
- Step-free street access for convenient loading / unloading

# FLOORPLAN




We have an in-house tech team to support production on request. Further details such as tech specs, truss dimensions, CAD & CWG documents, can also be provided.



Ground Floor



First Floor

-  All Access Points
-  Available BOH Areas on Request
-  First Floor – Balcony Area



## FAQs

*Contact us for any other questions*

### **What is included in my hire?**

- Use of our motorised truss
- High speed WiFi 400 mbps
- Blackout blinds
- Acoustic capabilities
- If you would like to add spaces to your event, such as the Garden extension, the Bar or Library, please enquire at [events@ladbrokehall.com](mailto:events@ladbrokehall.com)

### **Can I work with suppliers not on your preferred supplier list?**

We know how important your suppliers are to you and welcome yours to our space. However, catering by Pollini is used in all of our spaces, aside from the Studio.

### **Any restrictions across the building?**

Please request the list of restrictions as any damages to the building, including floors and walls will be charged additionally. Load out/in takes place during the hours of 8am to 10:30pm as we are mindful of our neighbours. The building operates extended hours.

### **Are there any additional fixed costs to be aware of?**

We cover basic cleaning of the space and kindly ask you to leave the space as you found it. Cleaning fees could be charged in addition if not left as it was. Our catering is not included and is chargeable in addition to the room hire. We have an in-house tech spec of our AV equipment available upon request. Additional AV equipment not on our inventory, and use of our tech engineers are chargeable in addition.

### **Can I hire the the Studio for a long period?**

Yes, of course. We have no restrictions on length of hire period, subject to availability.



THANK YOU

*Hope to see you soon*

79 Barlby Road, London, W10 6AZ

[events@ladbrokehall.com](mailto:events@ladbrokehall.com)

